

SECURITY INFORMATION MODELLING (SIM)

SCG is now providing clients with market-leading security information modelling (SIM), designed to help you visualise and mitigate security risks during the design stage.

A range of security system issues can now be quickly and easily identified and remedied on new building, installation or upgrade projects using SCG's security information modelling tools SIM-Vision and SIM-Detect.

Custom designed in Revit by our in-house engineering team, the new technology addresses one of the biggest limitations of security cameras and sensors - areas where the vision or detection can't reach - 'blind spots' that are often unrecognisable until systems are installed and tested.

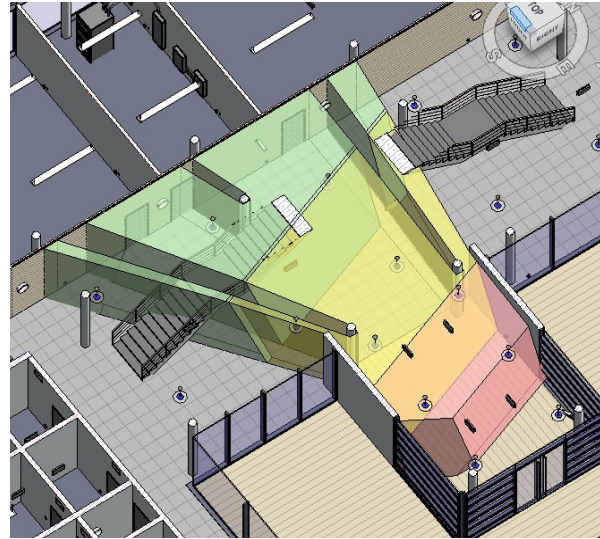
SIM-VISION: Models CCTV camera views in 2D and 3D.

SIM-DETECT: Models spaces protected by volumetric movement sensors live in the Revit model.

SIM-Vision and SIM-Detect use the unique specifications of cameras and sensors (sensor size, resolution, focal length, view angles, aspect ratio) and their installation requirements (height, target view distance, target view height, tilt) to instantly and accurately model coverage, and can demonstrate:

- Camera view
- 3D field of view
- Flattened view using an existing floor plan

Clash detection demonstrates where the view is obscured by walls, columns and other obstacles.



SIM-Vision's 3D field of view (above) and flattened view (below left) use camera specifications and installation requirements to demonstrate vision obstruction by the columns and lighting pictured below right.

Allowing users to visualise issues during planning is a huge leap forward in security risk management and systems design, enabling risks to be identified and mitigated prior to installation, saving you time and money.

Talk to us today about using SIM-Vision and SIM-Detect on your next project with Security Consulting Group.

